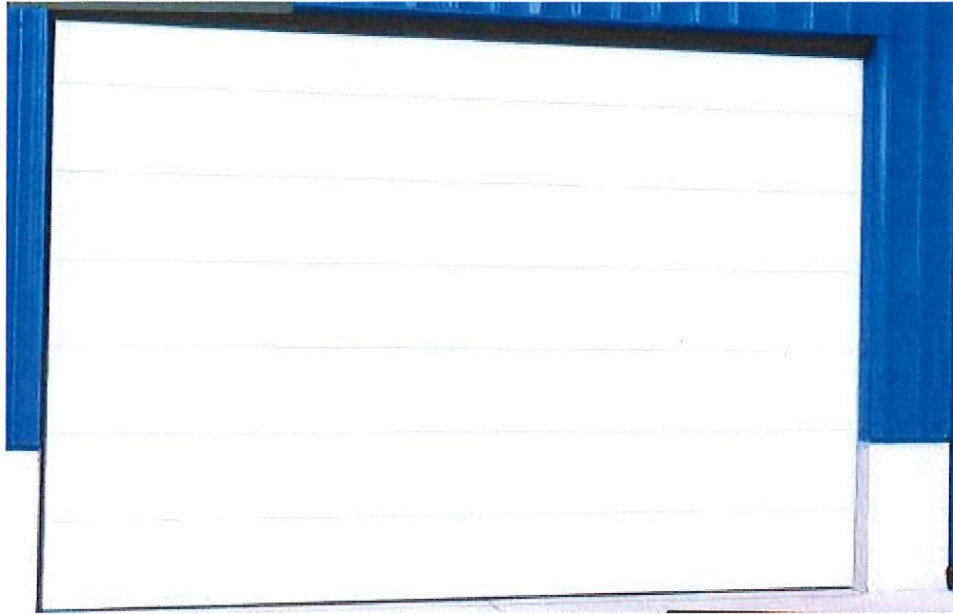


# Clopay Commercial Garage Door Steel Polyurethane Insulated with Thermal Break Model 3718



**Model 3718** -- Flush panel design

## ***Construction***

- Sections are 1 3/4" thick.
- Stucco embossed exterior flush texture and interior steel skin with micro-grooved ribs.
- Panels are prepainted inside and out to inhibit rust.
- Hot-dipped, galvanized steel is painted with primer and given a tough oven-baked polyester top coat to provide the most rust-resistant steel door available.
- Three-stage prepainting process is inside and out for a durable, maintenance free finish.

## ***Insulation***

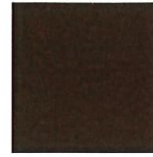
- Exterior and interior steel skins filled by foamed-in-place polyurethane foam.
- Polyurethane foam is CFC and HCFC free and utilizes recycled steel and packaging materials.
- Both steel skins are separated by a continuous thermal break.

- Insulating R-Value of 15.05

### **Colors**



White



Brown

### **Warranty**

- 10 years against rust through.

### **WINDOW OPTIONS**

- 24" x 8" or 24" x 12" window lites of cellular PVC frame construction available with 1/8" DSB, 1/2" insulated or insulated tempered, 1/4" wire glazing options.
- Full vision section, prepainted white or brown; glazing options include 1/8" DSB or tempered, 1/8" plexiglass or polycarbonate and 1/2" insulated.